



# Noah's Ark Independent Primary School

Subject: Creative Arts	Examiner: Moreo, A.
Type: Mid-Year Exam	Moderator: Rwizi, A
Date: 21 May 2019	Grade: 7
Marks: 40 Marks	Time: 60 minutes

Name: \_\_\_\_\_

## Instructions:

Read the questions carefully before you start writing.

Make sure you answer ALL the questions.

Write neatly and legibly.

## Section A: Drama

1. Match the following terms with the correct definition (3)

Terms	Answer	Definitions
Modulating pitch		a) Changing the speed at which you speak
Modulating pace		b) Changing the rhythm of how you speak
Modulating volume		c) Changing between high and low sounds.
		d) Changing how loudly or softly you speak
		e) Changing the tone in which you speak.

2. Answer if the following statements are true or false. If false correct the statement to be true. (5)

- a. When you keep the pitch of your voice consistent in is called inflection.

-----  
-----  
b. Modulation is giving special meaning to your words so that the audience pays attention to them. -----  
-----

c. The tone-colour of your voice is about the mood or picture you express.  
-----  
-----

3. Differentiate between vocal characterisation and physical characterisation. (4)

-----  
-----  
-----  
-----

4. Explain storytelling techniques. (2)

-----  
-----

5. Describe how you would use body language when telling a story. (2)

-----  
-----

6. Discuss how you would use choral verse to tell a poem. (2)

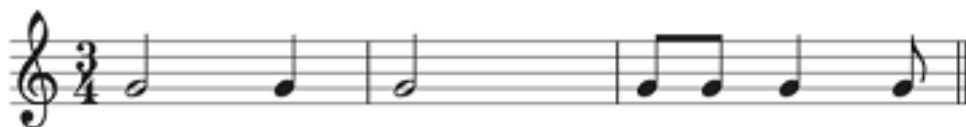
-----

7. Explain what a cue means. (2)

----- / 20 Marks (Section A)

Section B: Music

1. Complete the following measures by calculating the note values present then lengthen the necessary notes so that each measure will match the time signature given. (2)



2. Calculate and complete the following sentences. (3)

a. A dotted minim means three \_\_\_\_\_.

b. A dotted quaver means \_\_\_\_\_ semi-quavers.

c. A dotted \_\_\_\_\_ means three quavers.

3. Colour Middle C on the keyboard below and circle it. (1)



4. Name the four-letter names found on the spaces in the treble clef. (2)

-----

5. Discuss some of the elements that help you know where the music is in a musical score. (2)

-----  
-----  
-----

6. Answer the following true and false statements. If false, correct the statement so it will be true. (3)

a. Music tells a story through notes.

-----

b. A note can be lengthened by putting a dot next to the note.

-----

c. The minim is the common factor between duple, triple and quadruple time signatures.

-----

7. Differentiate between tempo and dynamics. (4)

-----  
-----  
-----  
-----

8. Give an example of a round that you have learnt.

(1)

-----

----- / 20 Marks (Section B)

----- / 40 Marks TOTAL